

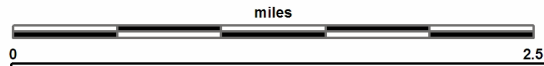
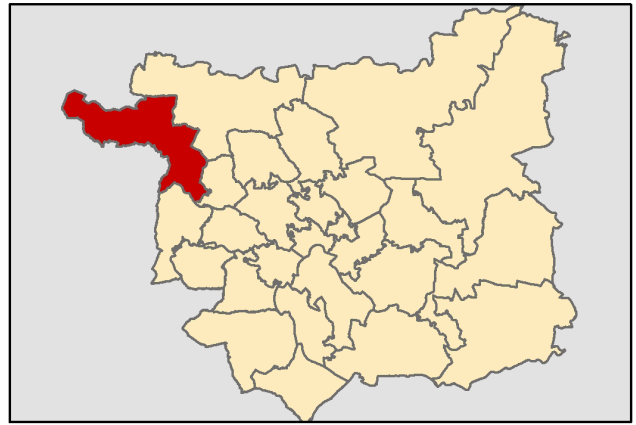
Aireborough

This report was produced by the Children's Performance Service on 01/06/2012. The information in these overviews are based on the cluster data profile version 5.12.

For more information telephone 0113 39 50701 or email educ.pmi@leeds.gov.uk or visit:

www.leedsinitiative.org/ClusterDataProfile.aspx

The map to the right gives the position of the cluster in Leeds. The map below shows the location of the Children's Centres, Primary and Secondary Schools in the cluster.



Map Key: Aireborough

2 - Children's Centre/s

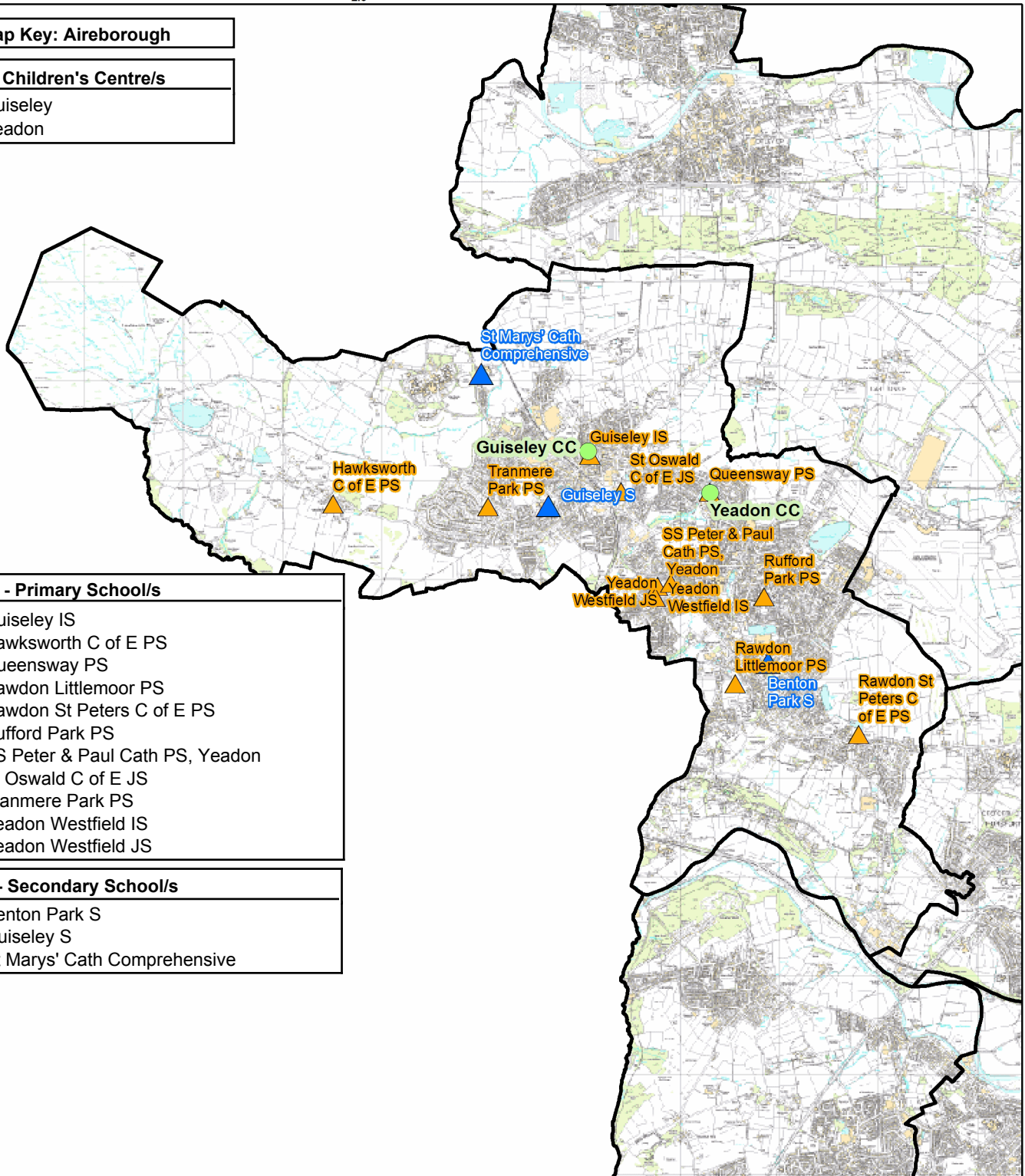
- Guiselay
- Yeadon

11 - Primary School/s

- Guiselay IS
- Hawksworth C of E PS
- Queensway PS
- Rawdon Littlemoor PS
- Rawdon St Peters C of E PS
- Rufford Park PS
- SS Peter & Paul Cath PS, Yeadon
- St Oswald C of E JS
- Tranmere Park PS
- Yeadon Westfield IS
- Yeadon Westfield JS

3 - Secondary School/s

- Benton Park S
- Guiselay S
- St Marys' Cath Comprehensive



Cluster Overviews key**Data Period:**

The codes in the key to the right are for the time periods that the data in these reports cover. They will appear next to all data sets.

Academic Year

Calendar Year

Financial Year

Snapshot

Other

DP:A**DP:C****DP:F****DP:S****DP:O****Cluster Overview**

Data Source: January School Census					DP: S	Data Source: January School Census					DP: S
Primary Schools		DFE	Total Number on roll			Secondary Schools		DFE	Total Number on roll		
			2010	2011	2012			2010	2011	2012	
Guiseley Infant School	2270		269	302	310	Benton Park School	4106	1417	1413	1396	
Hawthornthwaite C of E Primary School	3351		96	96	96	Guiseley School	4108	1335	1365	1348	
Queensway Primary School	2356		241	225	226	St Marys' Catholic Comprehensive	4601	1201	1202	1190	
Rawdon Littlemoor Primary School	2271		311	320	319	Total		3953	3980	3934	
Rawdon St Peters C of E Primary School	3031		315	312	310	Data Source: Children's Services					
Rufford Park Primary School	2002		215	199	216	Children's Centre		Ofsted ID			
SS Peter & Paul Catholic Yeadon	3363		213	219	209	Guiseley					
St Oswald C of E Junior School	3350		251	252	265	Yeadon					
Tranmere Park Primary School	2348		310	309	311	Data Source: Children's Services - Feb 2012					
Yeadon Westfield Infant School	2358		203	221	231	Children's Centre reach area registration for families of children aged 0-5					% Registered
Yeadon Westfield Junior School	2324		230	225	210	Cluster					52.55
Total			2654	2680	2703	Wedge					53.88
						Leeds all					60.23

Data Source: The office of National Statistics population mid-year estimates										DP: S
Population Estimates	0-15			Working Age			60/65+			
Number of people by age group/year	2008	2009	2010	2008	2009	2010	2008	2009	2010	
Cluster	6137	6167	6224	21690	21842	22024	6915	7097	7339	
Wedge	44108	44366	44774	207876	208717	211509	47163	47875	48413	
Leeds all	132741	133396	134493	516578	522769	531036	129937	131536	133240	

Data Source: NHS Leeds												DP: S	
Under Fives		September 2010						September 2011					
Number of infants by age group:		0-1	1-2	2-3	3-4	4-5	Total	0-1	1-2	2-3	3-4	4-5	Total
Cluster		426	406	392	426	379	2029	390	442	391	395	441	2059
Wedge		3318	3278	3014	3023	2870	15503	3376	3315	3236	3035	3102	16064
Leeds all		10202	9848	9478	9195	9113	47836	9996	10173	9787	9438	9319	48713

Data Source: January School Census												DP: S
Percentage of pupils who are:	Black and Minority Ethnic			English as an Additional Language			Free School Meal Eligible			Special Education Needs		
Primary	2010	2011	2012	2010	2011	2012	2010	2011	2012	2010	2011	2012
Cluster school	5.5	5.9	8.0	2.3	2.5	2.7	7.9	8.4	8.8	10.1	12.6	15.9
Cluster residence	5.0	5.6	7.6	1.9	2.1	2.3	7.7	8.8	8.7	10.7	12.6	15.0
Wedge school	19.3	20.7	22.2	13.3	14.0	14.3	18.7	19.7	19.4	15.1	15.3	15.6
Total primary	23.6	24.8	26.4	15.8	16.5	17.1	21.5	22.2	22.0	17.8	17.8	17.4
Secondary	2010	2011	2012	2010	2011	2012	2010	2011	2012	2010	2011	2012
Cluster school	5.9	6.0	6.3	2.5	2.6	2.8	5.7	5.2	5.8	16.1	10.9	9.6
Cluster residence	4.0	3.8	3.8	1.4	1.4	1.5	7.9	6.9	7.3	19.0	13.2	11.9
Wedge school	15.7	16.1	16.7	9.6	9.8	10.2	16.0	16.3	16.5	19.2	17.8	14.6
Total secondary	18.6	19.4	20.4	10.4	10.0	11.1	19.0	19.4	19.5	21.4	20.4	19.0
Leeds all	21.4	22.5	23.9	13.4	13.7	14.6	20.6	21.1	21.1	20.0	19.6	18.7

Data Source: HM Revenue and Customs - taken on 31st August 2007-2009										DP: S
Child Poverty	Number of children (under 16) in families in receipt of CTC or IS/JSA			Number of children (all ages) in families in receipt of CTC or IS/JSA			Number of children in poverty, by age of youngest child, 2009			
	2007	2008	2009	2007	2008	2009	0-4	5-10	11-15	16-19
Cluster	480	490	520	540	570	590	305	150	125	10
Wedge	8010	7990	8415	8935	8950	9465	4915	2700	1460	390
Leeds all	30235	29700	31030	33690	33300	34965	18720	9640	5115	1490

Data Source: Children's Services - Summer Term 2011					DP: S
Nursery Education Grant Claims	Number of eligible children	Number of: Claims by childcare setting		Resident Claims	Non Resident Claims
Cluster	653	687		527	160
Leeds all	14500	13851		9704	4148

Data Source: January School Census and 2010 Index of Multiple Deprivation										DP: S
IMD	% of pupils resident in most deprived areas	3% most deprived			10% most deprived			20% most deprived		
		10	11	12	10	11	12	10	11	12
Primary										
Cluster school		0.2	0.1	0.1	0.5	0.5	0.3	0.9	1.0	0.8
Cluster residence		0.0	0.0	0.0	0.0	0.0	0.0	0.0	0.0	0.0
Wedge school		1.5	2.8	2.5	15.6	15.0	15.1	26.8	27.6	27.8
Total primary		8.2	8.4	8.3	28.1	27.1	27.3	36.6	37.6	38.0
Secondary										
Cluster school		0.5	0.7	0.8	1.5	1.4	1.5	2.7	3.7	3.7
Cluster residence		0.0	0.0	0.0	0.0	0.0	0.0	0.0	0.0	0.0
Wedge school		2.6	3.1	2.9	15.0	14.2	14.0	24.6	25.0	24.7
Total secondary		7.0	7.5	7.6	24.0	23.5	23.8	32.3	33.5	33.6
Leeds all		7.7	8.0	8.0	26.4	25.7	25.9	34.8	35.9	36.2

Data Source: January School Census and CACI ACORN											DP: S
KEY: Wealther Achievers(WA), Urban Prosperity (UP), Comfortably Off (CO), Moderate Means (MM), Hard Pressed (HP)											
Percentage of pupils in each ACORN category	2011					2012					
	WA	UP	CO	MM	HP	WA	UP	CO	MM	HP	
Primary											
Cluster school	23.8	2.0	44.7	11.7	17.0	23.1	2.1	44.1	12.2	17.5	
Cluster residence	24.5	1.7	44.8	11.2	17.3	24.4	2.0	43.8	11.6	17.5	
Wedge school	14.6	8.0	31.3	13.0	32.3	14.2	8.2	31.5	13.0	32.2	
Total primary	15.4	5.9	27.8	15.8	34.3	15.0	6.0	27.7	15.9	34.6	
Secondary											
Cluster school	32.5	3.8	41.9	9.2	12.1	31.6	3.9	42.8	9.1	12.2	
Cluster residence	27.0	1.9	44.8	11.2	14.8	26.4	1.6	45.0	11.2	15.4	
Wedge school	18.4	7.0	32.6	12.6	28.8	18.4	7.1	32.8	12.7	28.4	
Total secondary	17.1	5.2	29.7	14.7	32.5	16.9	5.3	29.8	14.7	32.6	
Leeds all	16.1	5.6	28.5	15.4	33.6	15.8	5.7	28.5	15.4	33.8	

Data Source: DWP information Directorate												DP: F
KEY: Job Seekers Allowance (JSA), Incapacity Benefit (IB), Lone Parent Benefit (LPB), Total Out of Work (TOW)												
Unemployment Percentage of working age people in receipt of:	2009				2010				2011			
	JSA	IB	LPB	TOW	JSA	IB	LPB	TOW	JSA	IB	LPB	TOW
Cluster	2.1	3.8	0.7	6.8	2.0	3.6	0.7	6.7	1.8	3.6	0.7	6.3
Wedge	3.5	4.7	1.2	9.8	3.4	4.7	1.2	9.7	3.4	4.7	1.0	9.5
Leeds all	4.4	5.9	1.8	12.6	4.3	5.8	1.7	12.3	4.2	5.8	1.5	12.1

Data Source: AXCIOM Lifestyle Survey 2009-2011													DP: S					
	Property type by %									Length of residence by %								
	Owned			Rented - Council			Rented - Private			Less than 1 year			2-5 years			More than 5 years		
	09	10	11	09	10	11	09	10	11	09	10	11	09	10	11	09	10	11
Cluster	76.9	76.7	76.4	14.2	14.3	14.3	8.9	9.0	9.3	3.9	4.8	3.4	23.2	17.9	16.6	72.9	77.3	80.0
Wedge	62.9	62.8	34.8	21.7	21.6	71.9	15.4	15.6	0.0	9.4	10.7	6.1	20.6	20.6	18.3	70.0	68.7	75.5
Leeds all	61.5	61.6	39.0	24.0	23.9	61.2	14.5	14.6	0.0	7.9	8.1	5.1	20.3	20.0	18.5	71.9	71.9	76.4
Income by %	<10k			10-20k			20-30k			30-40k			40-50k			50k+		
	09	10	11	09	10	11	09	10	11	09	10	11	09	10	11	09	10	11
Cluster	15	12	13	20	17	16	17	14	13	17	17	17	15	17	18	17	25	22
Wedge	20	17	18	21	20	22	16	16	15	15	17	18	14	11	13	15	19	14
Leeds all	20	18	18	21	20	23	16	15	16	15	18	17	14	13	13	14	16	14
Struggling with payments by %	Food									Bills			Mortgage					
				09	10	11				09	10	11						
Cluster				10.7	6.9	4.8				10.4	10.7	5.5				0.9	2.2	0.5
Wedge				15.4	11.1	6.2				15.2	12.6	7.5				1.7	2.0	1.6
Leeds all				15.9	10.8	6.4				16.3	13.0	8.3				2.2	2.2	1.7

Being Healthy

Data Source: NHS Leeds										DP: Various - Listed with each report								
Birth Data	3 year rolling average of births below 2.5kg						Number and rate of conceptions per 1000 15-17 year olds											
	% low birth weight babies						DP: O				Number				Rate			
	2006-08		2007-09		2008-10		June to May		2008-09		2009-10		2008-09		2009-10			
Cluster	5.9		5.8		5.1		Cluster		26		28		21		23			
Wedge	7.1		7.1		6.8		Wedge		380		355		41		40			
Leeds all	7.8		7.8		7.6		Leeds all		1220		1145		45		43			
DP: C	% of women receiving a health and social care needs assessment at 12 weeks as a percentage of live births in the same year						DP: F				% Initiating breastfeeding April to March				% breastfeeding at 6 weeks April to March			
	2009		2010		2011		2009-10		2010-11		2009-10		2010-11		2009-10		2010-11	
Cluster	86.1		87.8		88.6		76.6		77.1		48.3		45.3					
Wedge	83.7		85.7		85.3		69.6		68.0		42.2		40.1					
Leeds all	81.6		82.9		84.0		67.6		65.1		40.4		39.3					
DP: C	Number of emergency admissions by age group 2007-11						Number of emergency admissions to hospital for injury, poisoning and certain other consequences of external causes by age group											
	0-4		5-10		11-18		0-4		5-10		11-18							
Cluster	1070		315		693		124		101		226							
Wedge	9185		2518		6030		1108		809		2250							
Leeds all	29793		8247		18194		3419		2522		6711							
Immunisation Data	% of 2 year olds receiving vaccinations in quarter 3 for:						% of 5 year olds receiving vaccinations in quarter 3 for:											
	Diphtheria			MMR			Diphtheria			MMR								
	09-10	10-11	11-12	09-10	10-11	11-12	09-10	10-11	11-12	09-10	10-11	11-12						
Cluster	96	96	97	87	88	92	94	94	98	92	86	93						
Wedge	97	97	98	88	90	95	95	93	96	93	90	94						
Leeds all	96	96	97	86	88	94	95	94	96	91	91	95						

Data Source: National Child Measurement Programme												DP: A		
Obesity	Obesity in Reception						Obesity in Year 6							
	% Obese			% Obese or overweight			% Obese			% Obese or overweight				
	08-09	09-10	10-11	08-09	09-10	10-11	08-09	09-10	10-11	08-09	09-10	10-11		
Cluster	6.9	7.5	7.0	19.2	20.6	19.6	16.8	15.9	15.2	30.8	30.6	30.5		
Wedge	9.6	10.0	9.4	23.0	24.4	23.1	20.6	20.2	18.7	34.2	33.9	32.7		
Leeds all	9.4	10.2	9.7	21.7	23.7	23.4	20.3	20.7	20.0	34.3	35.1	34.3		
Obesity	Obesity in Reception						Obesity in Year 6							
	3 year average 2008-2011						3 year average 2008-2011							
	% Obese			% Obese or overweight			% Obese			% Obese or overweight				
Cluster	7.12			19.79			15.98			30.63				
Wedge	9.66			23.49			19.88			33.66				
Leeds all	9.77			22.96			20.32			34.56				

Stay Safe

Data Source: Children's Services					DP: Various - Listed with each report						
Number of LAC and Child protection plans	The number of children and young people looked after by the Local Authority - March based on home address before coming into care					based on placement address			The number of children with child protection plans - March		
	<i>DP: S</i>								<i>DP: S</i>		
	2011		2012		2012		2011		2012		
Cluster	23		16		35		19		36		
Wedge	0		411		326		0		379		
Leeds all	1439		1454		1454		947		1019		
Number of Common Assessments (CAFs)					Social Care			Social Care Referrals		Requests for Service	
<i>DP: C</i>					<i>DP:A</i>					<i>DP:S</i>	
		2008	2009	2010	2011	2009	2010	2011	Feb 11 - Jan 12		
Cluster	SUPP	23	34	29	Cluster	293	259	288	705		
Wedge	140	243	312	278	Wedge	3813	3622	3852	8460		
Leeds all	457	849	1115	892	Leeds all	14248	13784	14000	30539		
Number of Child and Adolescent Mental Health Services referrals											
<i>DP: S</i>		aged 11 and under			aged 12-18			total referrals			
September-October		2009-10		2010-11		2009-10		2010-11		2009-10 2010-11	
Cluster	6000		40		132		71		192 111		
Wedge	512		362		1054		588		1566 950		
Leeds all	1767		1124		2976		1730		4743 2854		

Make a positive Contribution

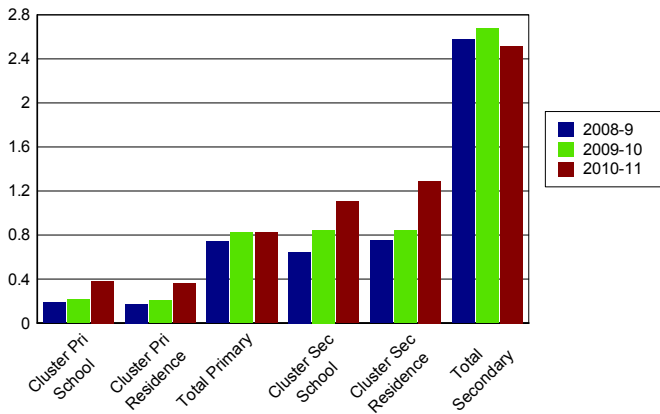
Data Source: West Yorkshire Police										<i>DP: C</i>	
Property Crime Number of recorded crimes for:	Burglary dwelling		Burglary elsewhere		Criminal damage		Robbery		Vehicle crime		
	10	11	10	11	10	11	10	11	10	11	
	Cluster	217	189	158	152	233	207	11	167	149	
Wedge	4156	4057	2127	2015	4299	3249	379	413	2945	2637	
Leeds all	9508	8487	5681	5408	13599	10426	1297	1226	9168	7971	
Personal Crime Number of recorded crimes for:					Drug Offences		Theft from person		Violent crime		
					10	11	10	11	10	11	
	Cluster					12	79	18	29	205	166
Wedge					187	934	290	525	2966	2712	
Leeds all					1248	3192	2235	3034	11233	10896	
Domestic Violence Incidents		Number of incidents recorded with a domestic qualifier or disposition code on the Storm WYP incident recording system - 2011									
Cluster	247										
Wedge	3695										
Leeds all	14525										

Data Source: Youth Offending Service										<i>DP: A</i>	
Youth Offending	Number of Offenders					Number of Offences					
	07-08	08-09	09-10	10-11		07-08	08-09	09-10	10-11		
Cluster	37	27	20	27		77	47	62	57		
Wedge	627	474	334	355		1616	1031	732	785		
Leeds all	2741	2166	1522	1511		6331	4883	3134	3150		
April 2010 - March 2011 Number of offences by young offenders											
	Burglary	Breaches	Criminal Damage	Drugs Offences	Motoring and Vehicle	Other	Public Order	Theft and handling	Violence against the person		
Cluster	SUPP	SUPP	8	SUPP	12	SUPP	5	18	7		
Wedge	96	68	86	50	62	67	58	171	127		
Leeds all	291	270	328	204	218	358	282	612	587		

Data Source: School Census													DP: A
Attendance and persistent absence by percentage	Attendance			Authorised Absence			Unauthorised Absence			Persistent Absence 15%			
	08-09	09-10	10-11	08-09	09-10	10-11	08-09	09-10	10-11	08-09	09-10	10-11	
Primary													
Cluster school	96	96	96	4	4	4	0.2	0.2	0.4	2.2	2.2	1.9	
Cluster residence	96	96	96	4	4	4	0.2	0.2	0.4	2.1	2.0	1.5	
Total primary	94	94	95	5	5	4	0.7	0.8	0.8	5.9	5.5	4.3	
Secondary													
Cluster school	94	93	94	6	6	5	0.6	0.8	1.1	7.1	8.7	7.4	
Cluster residence	94	93	94	6	6	5	0.8	0.8	1.3	8.3	9.5	8.5	
Total secondary	92	92	92	6	6	5	2.6	2.7	2.5	13.0	13.1	11.2	

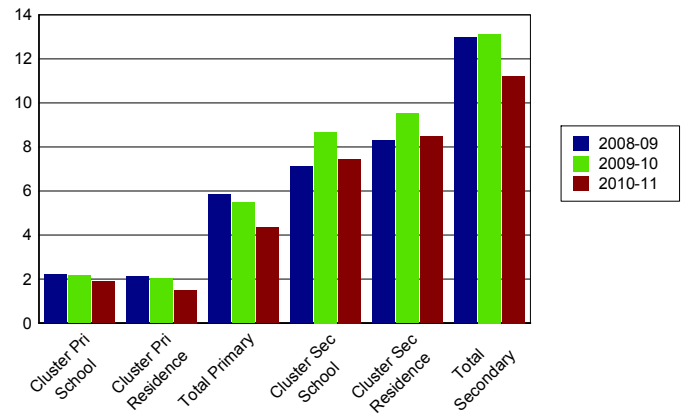
% Unauthorised Absence

2008-2011



% Persistent Absence

by 15% measure 2008-2011



Data Source: Children's Services													DP: A
Exclusions	Fixed Term Exclusions						Permanent Exclusions						
	Number			Rate per thousand			Number			Rate per thousand			
Primary	08-09	09-10	10-11	08-09	09-10	10-11	08-09	09-10	10-11	08-09	09-10	10-11	
Cluster school	3	2	19	1.2	0.8	7.1	0	0	0	0.0	0.0	0.0	
Cluster residence	2	2	18	0.7	0.6	5.8	0	0	0	0.0	0.0	0.0	
Total primary	467	371	455	7.7	6.0	7.3	2	2	2	0.0	0.0	0.0	
Secondary													
Cluster school	313	513	266	80.3	129.8	66.8	1	6	3	0.3	1.5	0.8	
Cluster residence	191	360	173	121.5	226.4	108.9	1	5	2	0.6	3.1	1.3	
Total secondary	4350	4286	3806	93.6	93.1	83.2	52	57	44	1.1	1.2	1.0	

Enjoy and Achieve

Data Source: Keypas and DFE performance tables
DP: A
Foundation Stage Profile Data The percentage of pupils achieving a good level of development (78+ points overall and 6+ points in all PSE and CCL strands)

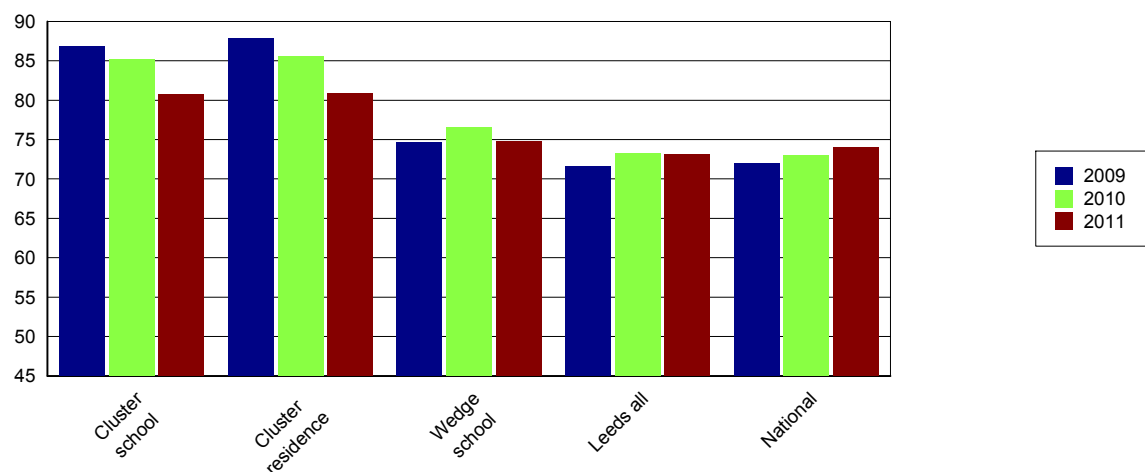
	2008	2009	2010	2011
Cluster school	67	65	65	71
Cluster residence	69	66	67	74
Leeds all	47	51	53	58

KS2 Data DP: A	English 4+			English 5+			Maths 4+			Maths 5+			English & Maths 4+		
	09	10	11	09	10	11	09	10	11	09	10	11	09	10	11
Cluster school	92	91	88	38	42	37	89	88	84	39	40	38	87	85	81
Cluster residence	92	90	87	38	43	38	90	89	84	40	42	38	88	86	81
Wedge school	83	82	83	32	34	30	80	82	80	33	33	35	75	77	75
Leeds all	79	79	81	28	31	32	77	79	78	33	31	32	72	73	73
National	80	80	82	29	33	29	79	79	80	35	34	35	72	73	74

KS2 Data - Expected progress	Made 2 levels of progress in English		Made 2 levels of progress in Maths	
	Number of pupils	Percentage	Number of pupils	Percentage
Cluster school	327	89.6	315	86.3
Wedge school	2174	88.1	2092	84.7
Leeds all	6334	88.6	6087	85.0
National		84.0		83.0

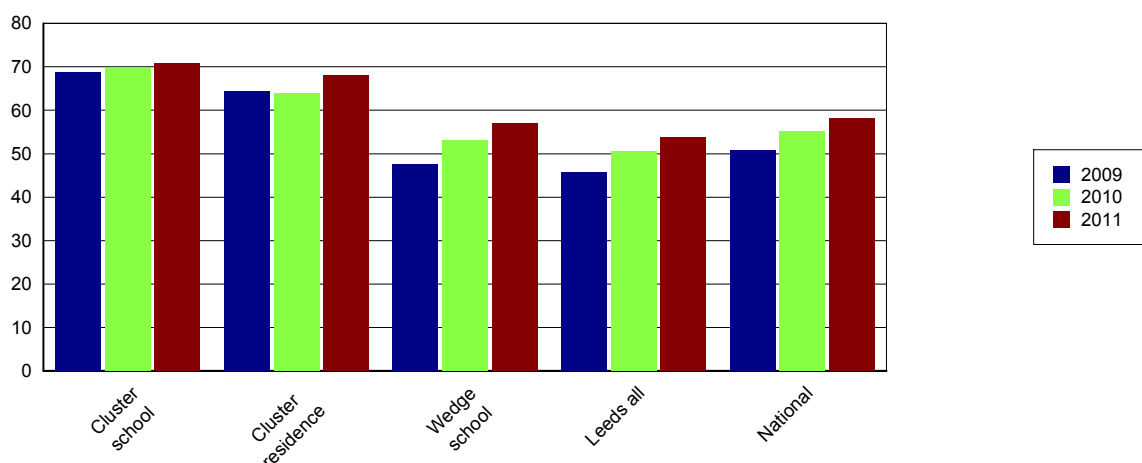
Percentage of English and Maths

Level 4+



Data Source: EPAS and DFE performance tables											DP: A		
The results are for GCSE & equivalent qualifications. The calculation of achieving no qualifications includes all qualifications													
KS4 Data	% of 5+ A*-C			% of 5+ A*-C inc Eng & Maths			% English Baccalaureate	% of 5+ A*-G			% achieving no qualifications		
	09	10	11	09	10	11		09	10	11	09	10	11
Cluster school	80	81	86	69	70	71	31	97	97	98	0	0	0
Cluster residence	77	78	84	64	64	68	26	95	97	96	1	1	1
Wedge school	68	75	81	47	53	57	19	92	94	96	1	1	1
Leeds all	67	76	82	46	51	54	13	91	94	94	2	2	1
National	70	76	81	51	55	58	15	94	95	95	1	1	1

Percentage 5 A*-C Including English and Maths



Achieve Economic Well Being

Key: Not in Employment, Education or Training (NEET), In Employment, Education or Training (EET), in Full time Education (FE)													
Data Source: November destination survey													DP: S
NEET/FE		Number of NEET			% NEET			Number of FE			% FE		
		2009	2010	2011	2009	2010	2011	2009	2010	2011	2009	2010	2011
Cluster school	Year 11	16	14	5	3	2	1	545	589	423	89	91	90
	Year 12	SUPP	SUPP	SUPP	SUPP	SUPP	SUPP	394	391	411	96	95	95
	Year 13	SUPP	SUPP	SUPP	SUPP	SUPP	SUPP	270	308	328	84	86	88
Cluster residence	Year 11	11	9	11	3	3	3	287	314	304	88	90	88
	Year 12	5	SUPP	SUPP	2	SUPP	SUPP	212	187	188	97	95	96
	Year 13	5	6	SUPP	3	3	SUPP	149	163	161	83	86	89
Leeds all	Year 11	646	393	357	8	5	5	6703	7194	6564	80	87	87
	Year 12	132	67	115	3	2	3	3436	3476	3550	90	93	93
	Year 13	121	135	120	5	4	4	2067	2350	2593	78	76	84

Data Source: Integrated Youth Support Service										DP: O	
16-18 NEET and EET Nov 2011 to Jan 2012	NEET		EET		Not Known		Other Activity				
	Number	%	Number	%	Number	%	Number	%			
Cluster	32	3.3	942	95.9	SUPP	SUPP	SUPP	SUPP			
Wedge	452	6.1	6860	93.0	104	1.4	21	0.3			
Leeds all	1538	7.0	20170	91.7	343	1.6	58	0.3			

Please Note: Leeds totals for 16-18 NEET will not match publicised totals as published totals include a proportion of those whose status has expired